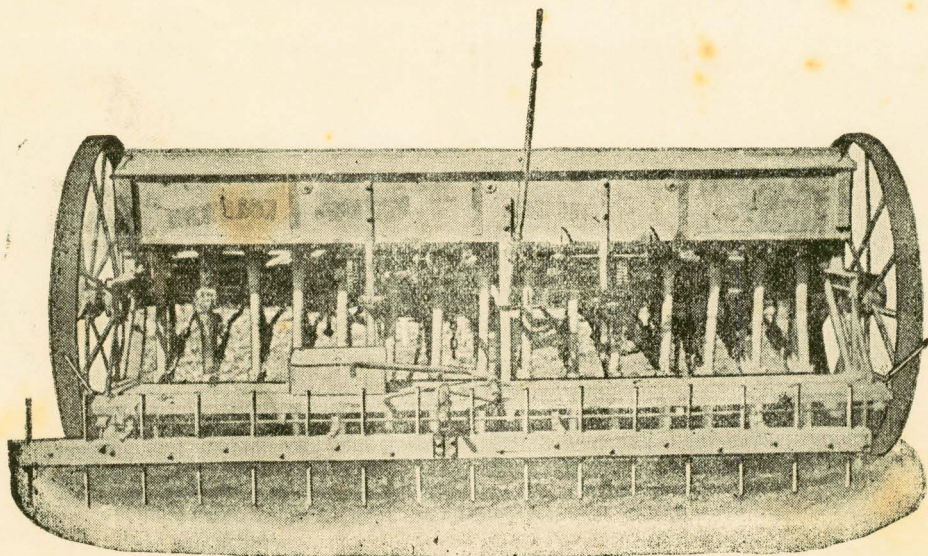


# THE PATENT "DONALDSON" REVERSIBLE SEED DRILL HARROW (PATENT APPLIED FOR)



## THIS WONDERFUL HARROW

Is made to fit all sizes and makes of Seed Drills with Foot Board attached at the back.

The Cranked Lever is fixed to the foot board, and is used to throw the Harrow to either side of the Drill, from the centre.

When the Harrow is lowered the Tines come half way between the hoes of the Drill, with the end Tine on wheel track of sown land.

The great advantages of the Harrow is to give the Manure and Seed a deeper covering, which retains more moisture near the seed, especially in a dry season, also to work up wheel tracks.

The Harrow has been in use for a number of years and has proved a great success.

It would prove itself a valuable asset to every Wheat Grower who procures one.

Wheat Growers! Secure the opportunity, and fit one to your Drill! Easy to fit and saves a team of Harrows after the Drill.

State size of Drill when making enquiries.

For Price and full particulars, apply to the Inventor

**EDGAR J. DONALDSON**

**HARSTON P.O., Vic.**

**PASS ME ON TO YOUR FARMER FRIEND. PLEASE!**